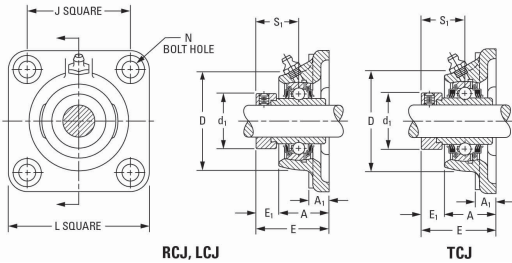




LP BEARING CORP.

RCJ, TCJ, LCJ Industrial Series

timken RCJ5/8 Ball Bearing Housed Units- Fafnir® Four-Bolt Flanged Units Eccentric Locking Collar



Bearing No. RCJ5/8

RCJ5/8 Bearing 2D drawings and 3D CAD models

Shaft Size d	5/8 in
Dimension D	2.063 in
Dimension E	1.598 in
Inside Ring Outside Diameter	1.106 in
Series	Industrial
Weight	1.16 lb
Seal Type	Shroud Seal
Housing Style	Four-Bolt Square Flange
Total Length L	76.20 mm
Housing Width A	0.929 in
Bolt Hole Spacing J	54 mm
Bolt Hole Size N	10 mm
Flange Thickness A1	9.5 mm
Center of Bearing from Housing End A2	17.2 mm
Inside Ring Width B	=Bearings1_Inside Ring Width= mm
Bolt Size	M10
Center of Bearing from Bearing End S	17.2 mm
Static Load Rating	1070 lbf
Dynamic Load Rating	2380 lbf