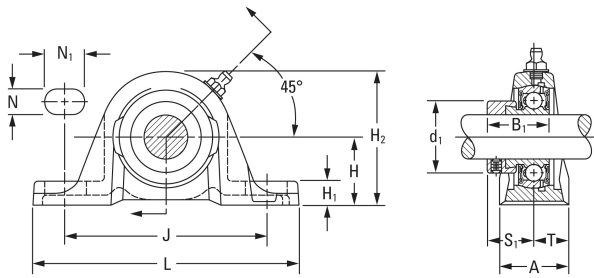




LP BEARING CORP.

VAS Standard Series

timken VAS 1 7/16 Ball Bearing Housed Units-
Fafnir® Pillow Block Units Eccentric Locking
Collar



Bearing No. VAS 1 7/16

Shaft Size d	1 7/16 in
Bearing Type	Ball Bearing
Inside Ring Outside Diameter	0.673 in
Dimension T	0.890 in
Series	Standard
Weight	3.514 lb
Seal Type	Molded Shroud
Housing Style	Two-Bolt Pillow Block
Base to Center Height H	47.62 mm
Total Length L	166.7 mm
Total Width A	1.780 in
Bolt Hole Spacing J	130.2 mm
Bolt Hole Width N	14.3 mm
Bolt Hole Length N1	24.6 mm
Foot Height H1	18.3 mm
Total Height H2	93.7 mm
Dimension L1	55.6 mm
Inside Ring Width B	=Bearings1_Inside Ring Width= mm
Center of Bearing from End S	9.5 mm
Dimension B1	1.531 in
Static Load Rating	3440 lbf
Dynamic Load Rating	6400 lbf

VAS 1 7/16 Bearing 2D drawings and 3D CAD models